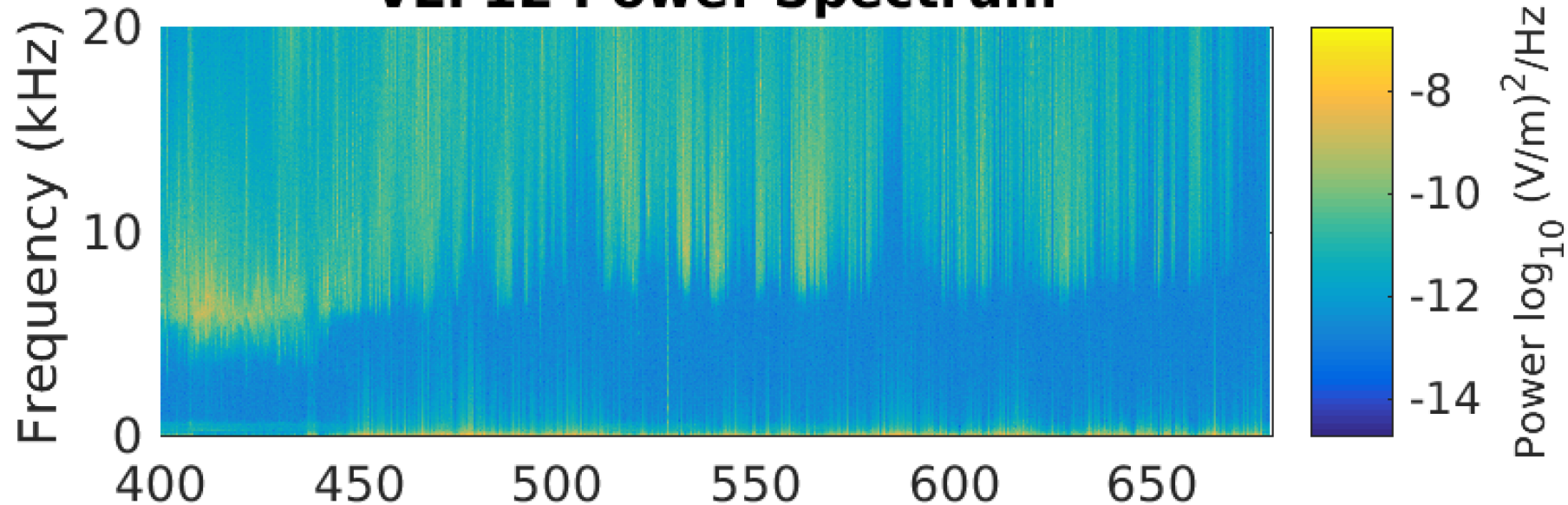


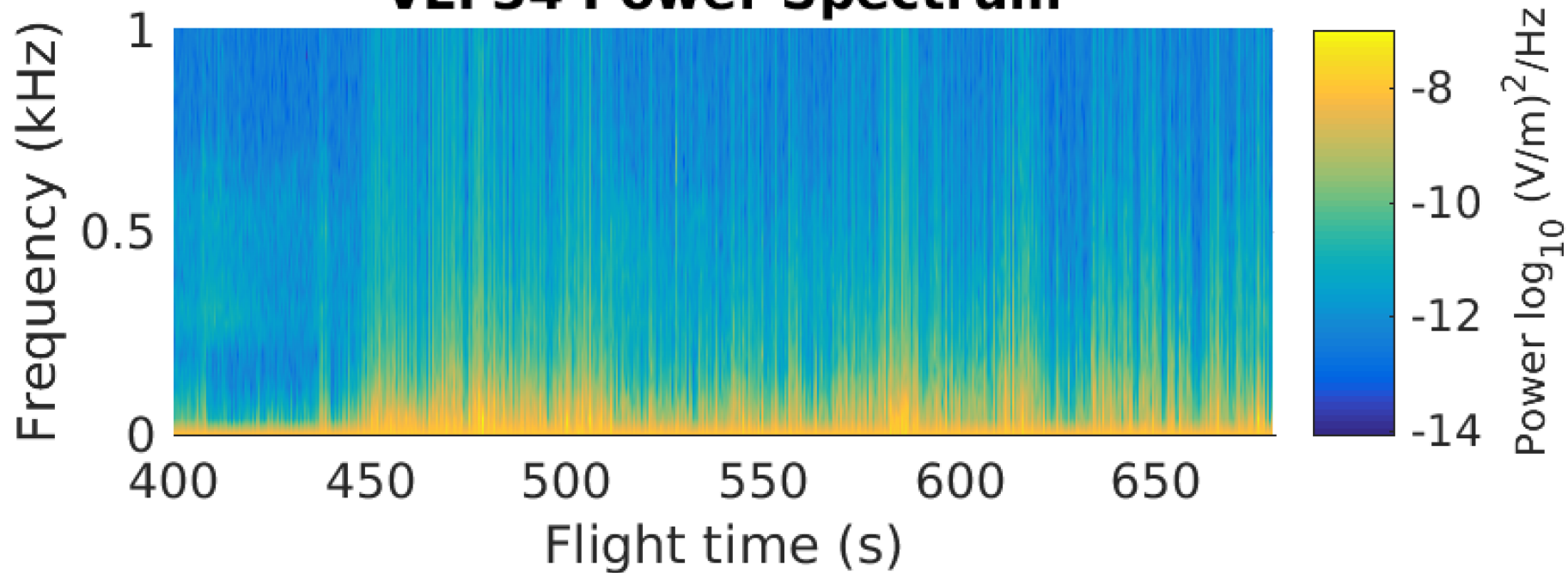
RENU2 E-Fields

Spencer Hatch
Jim LaBelle
Dartmouth College

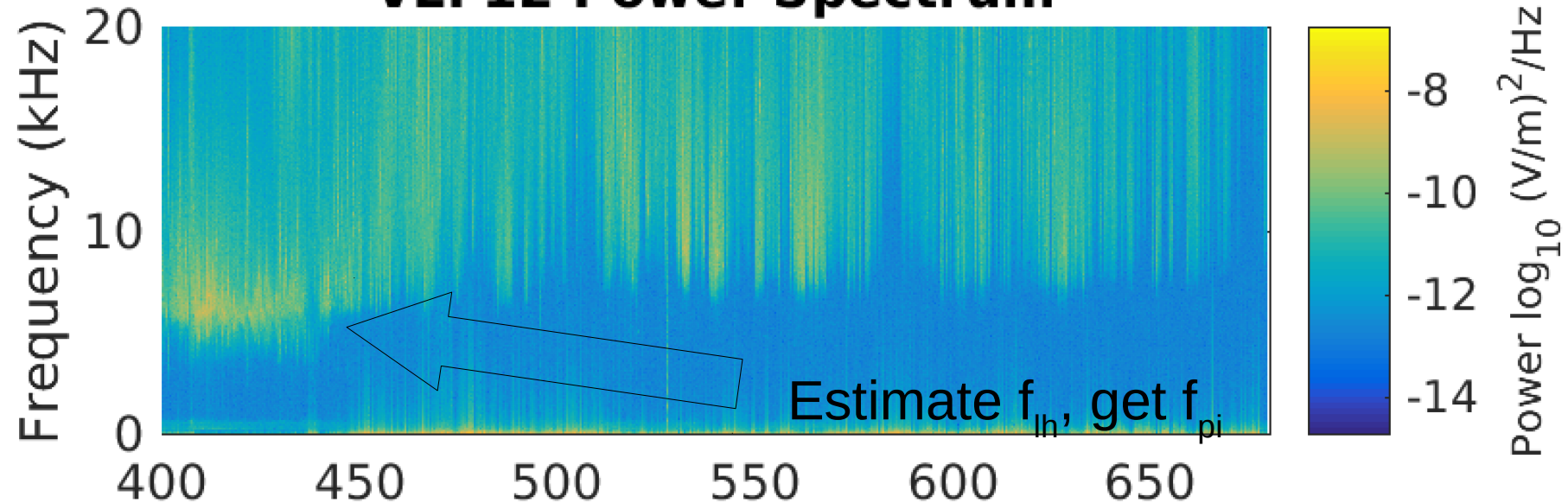
VLF12 Power Spectrum



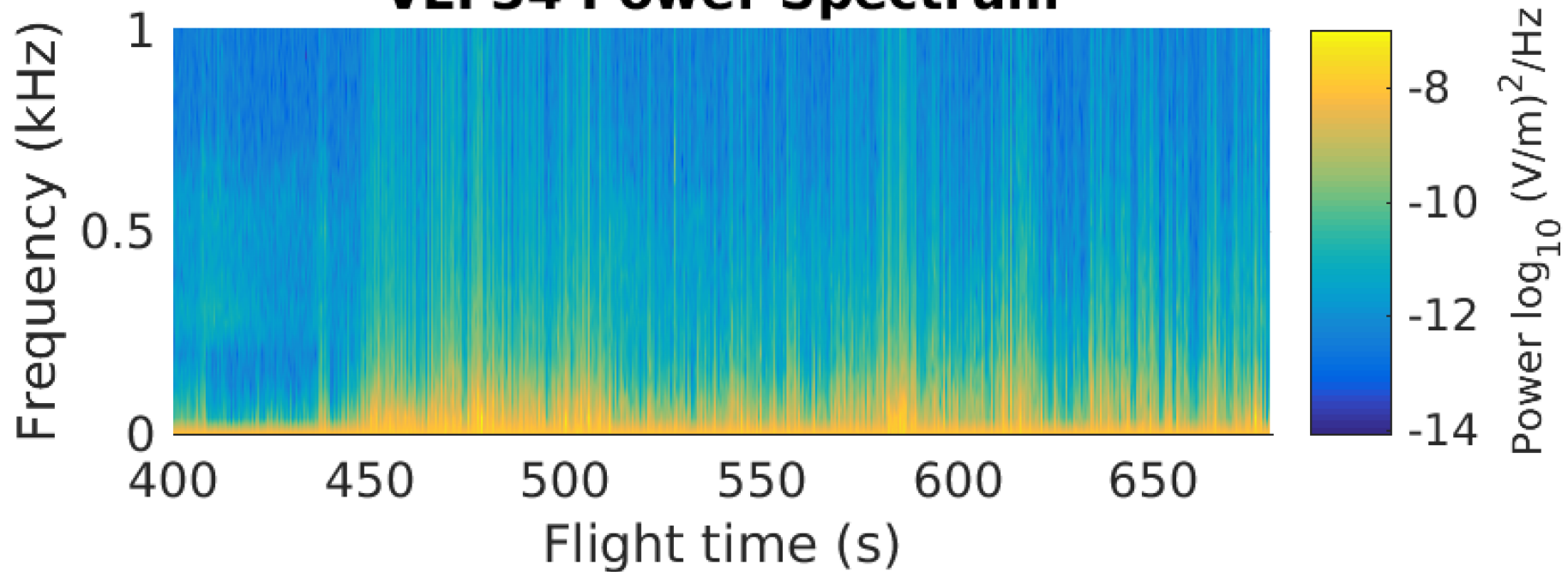
VLF34 Power Spectrum



VLF12 Power Spectrum



VLF34 Power Spectrum



Jim LaBelle's Idea: Estimate f_{LH} feature near 460 s

- $f_{LH} \sim 5$ kHz
- Svalbard lat/long: 77.87 N/20.9 E
- Alt. estimate: 600 km
- $|B_{total}(460 \text{ s})| = 4.3e4 \text{ nT} (0.43 \text{ G})$
- $f_{pi} \sim 7.8$ kHz

Jim LaBelle's Idea: Estimate f_{LH} feature near 460 s

- $f_{LH} \sim 5$ kHz
- Svalbard lat/long: 77.87 N/20.9 E
- Alt. estimate: 600 km
- $|B_{total}(460 \text{ s})| = 4.3e4 \text{ nT} (0.43 \text{ G})$
- $f_{pi} \sim 7.8$ kHz

$$f_{pe} \sim 1.3 \text{ MHz}$$

Jim LaBelle's Idea: Estimate f_{LH} feature near 460 s

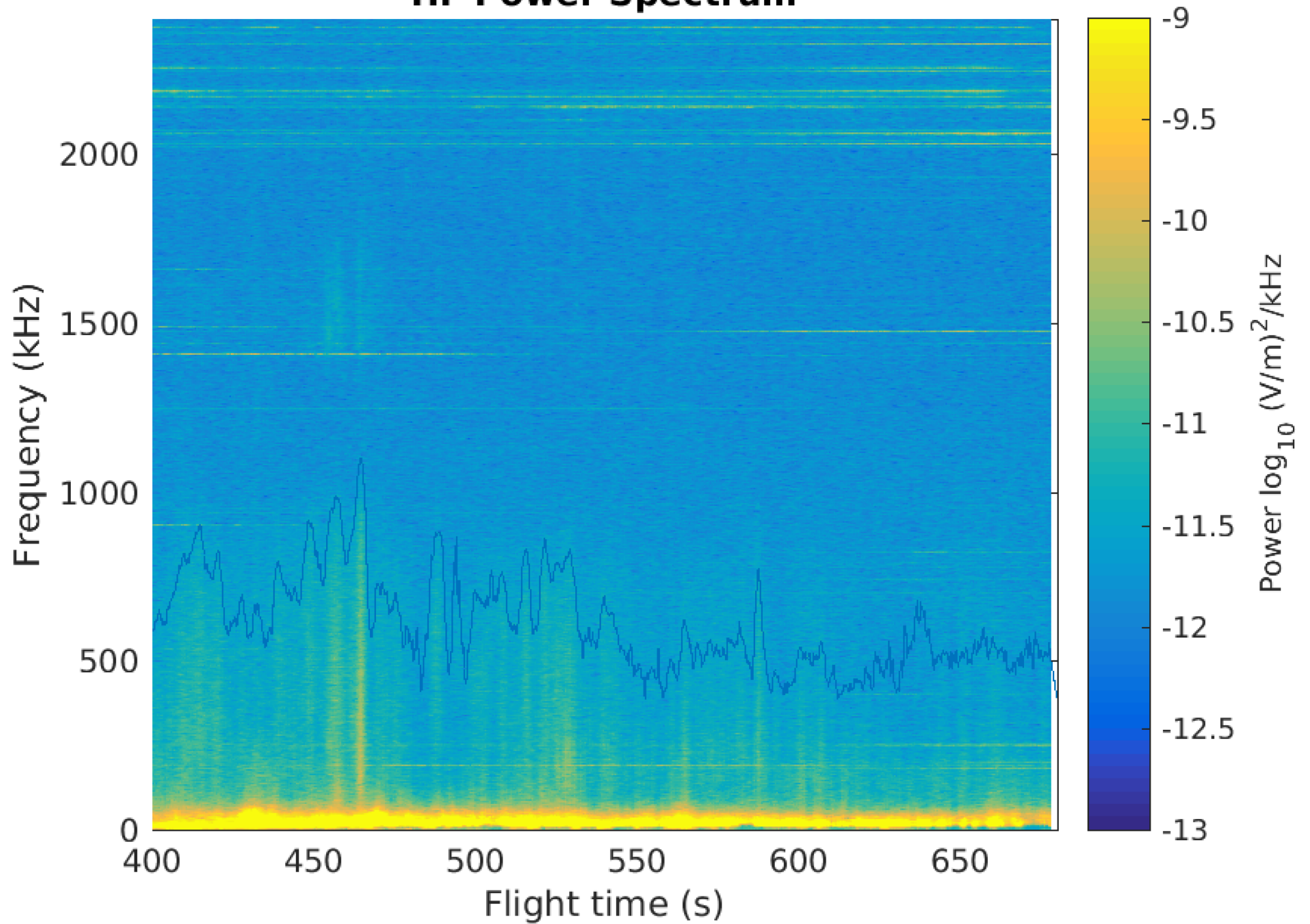
- $f_{LH} \sim 5$ kHz
- Svalbard lat/long: 77.87 N/20.9 E
- Alt. estimate: 600 km
- $|B_{total}(460 \text{ s})| = 4.3e4 \text{ nT} (0.43 \text{ G})$
- $f_{pi} \sim 7.8$ kHz

$$f_{pe} \sim \mathbf{1.3 \text{ MHz}}$$

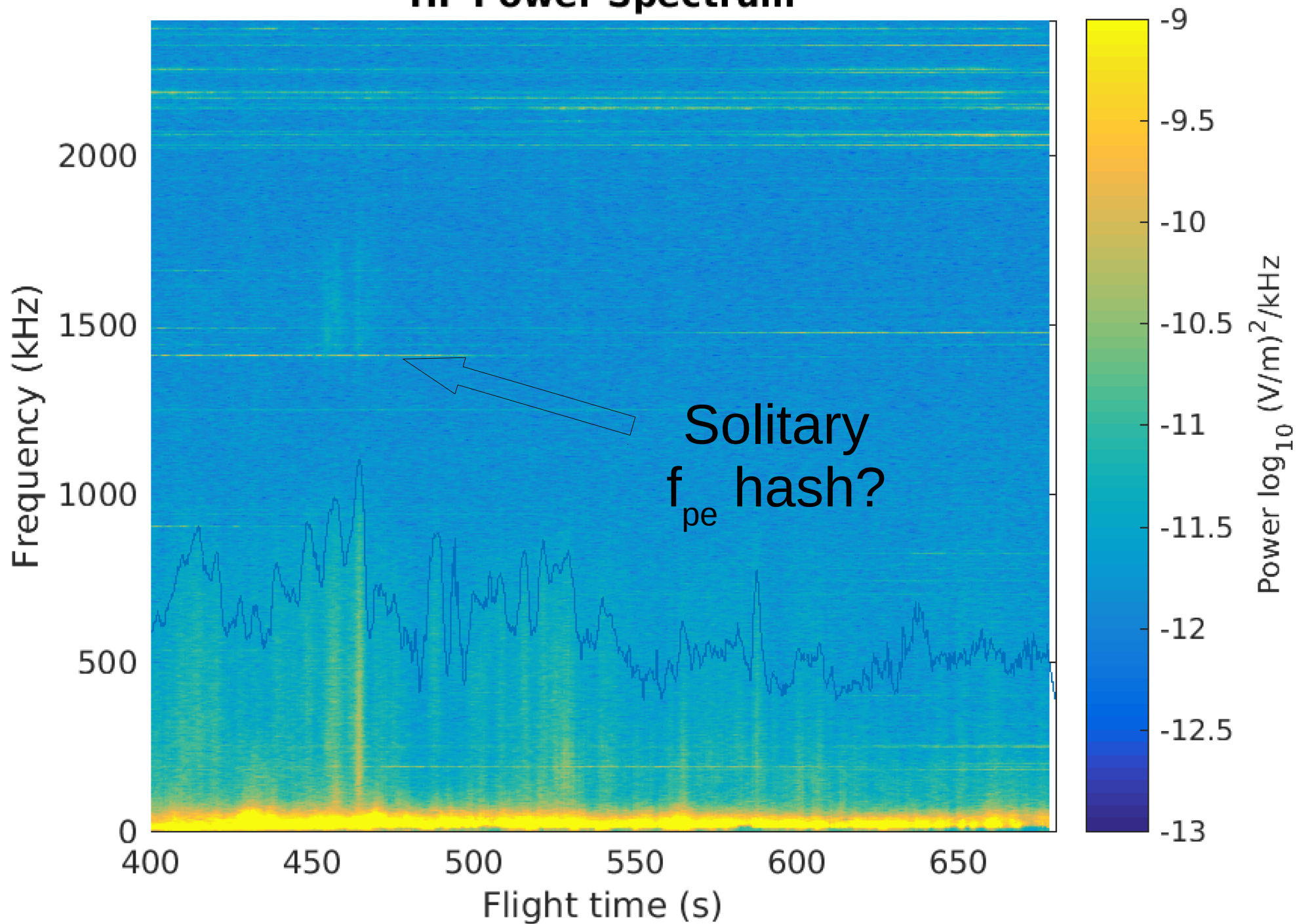


Hash appears at this frequency

HF Power Spectrum



HF Power Spectrum

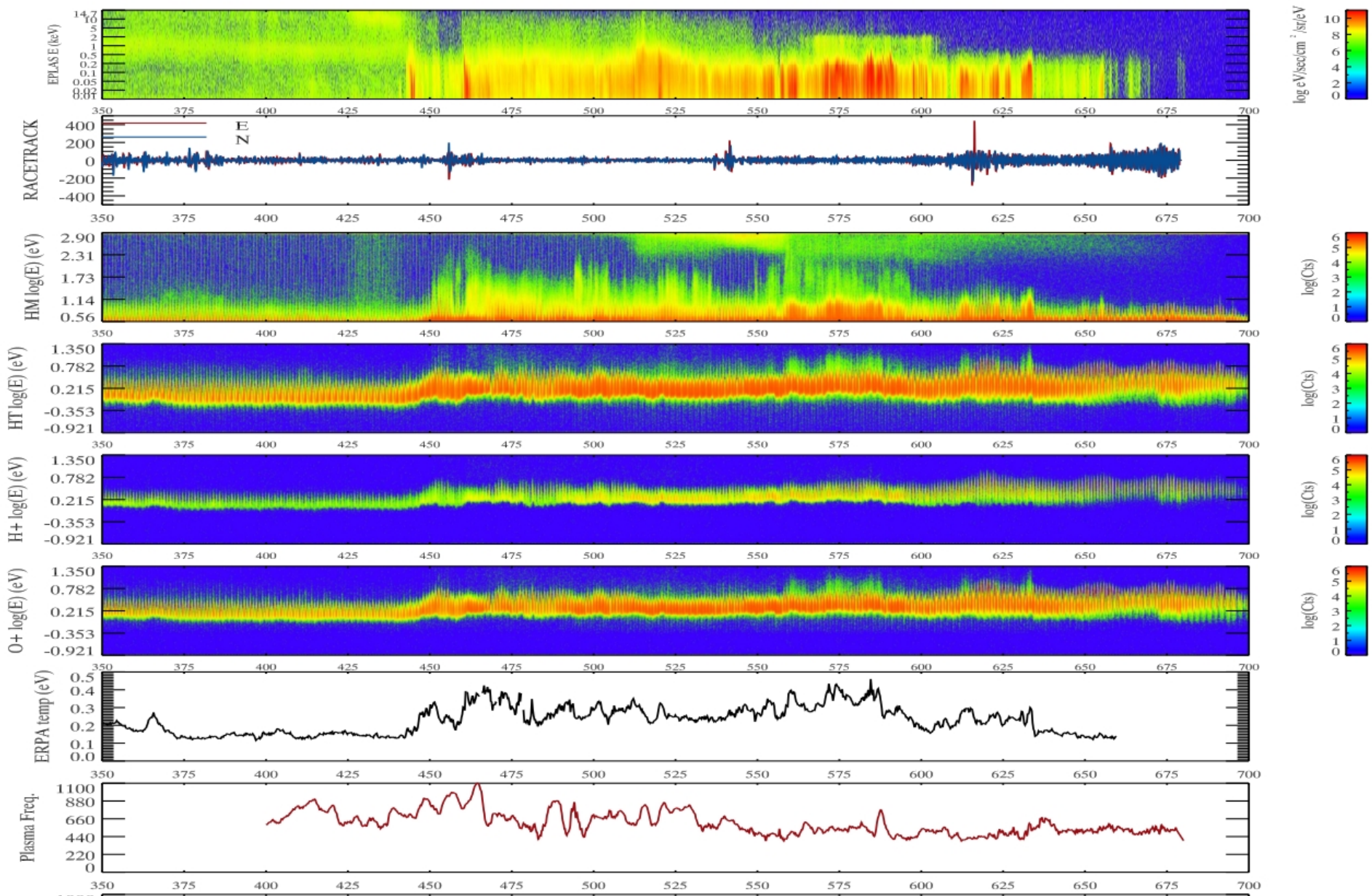
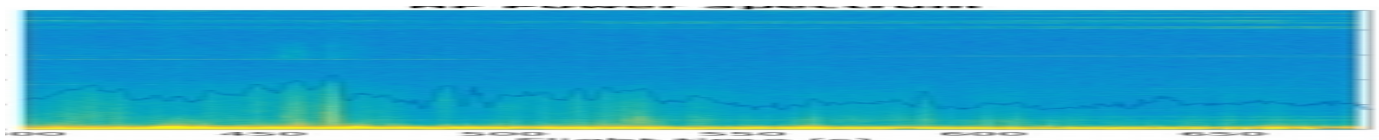


Ideas

- The f_{pi} hash
 - Temporally correlated with ...
 - Beginning of PMAF?
 - EPLAS?
 - RACETRACK?
 - ERPA Temperature depression?
- Science question (from summary):

“... electron precipitation may be driven by Alfvén waves. what is the connection between the stepped ion precipitation and these waves -- both signatures of reconnection?”

-->Do we have MLT data?



Issues

- Just got data
- Haven't cracked .RC1 files