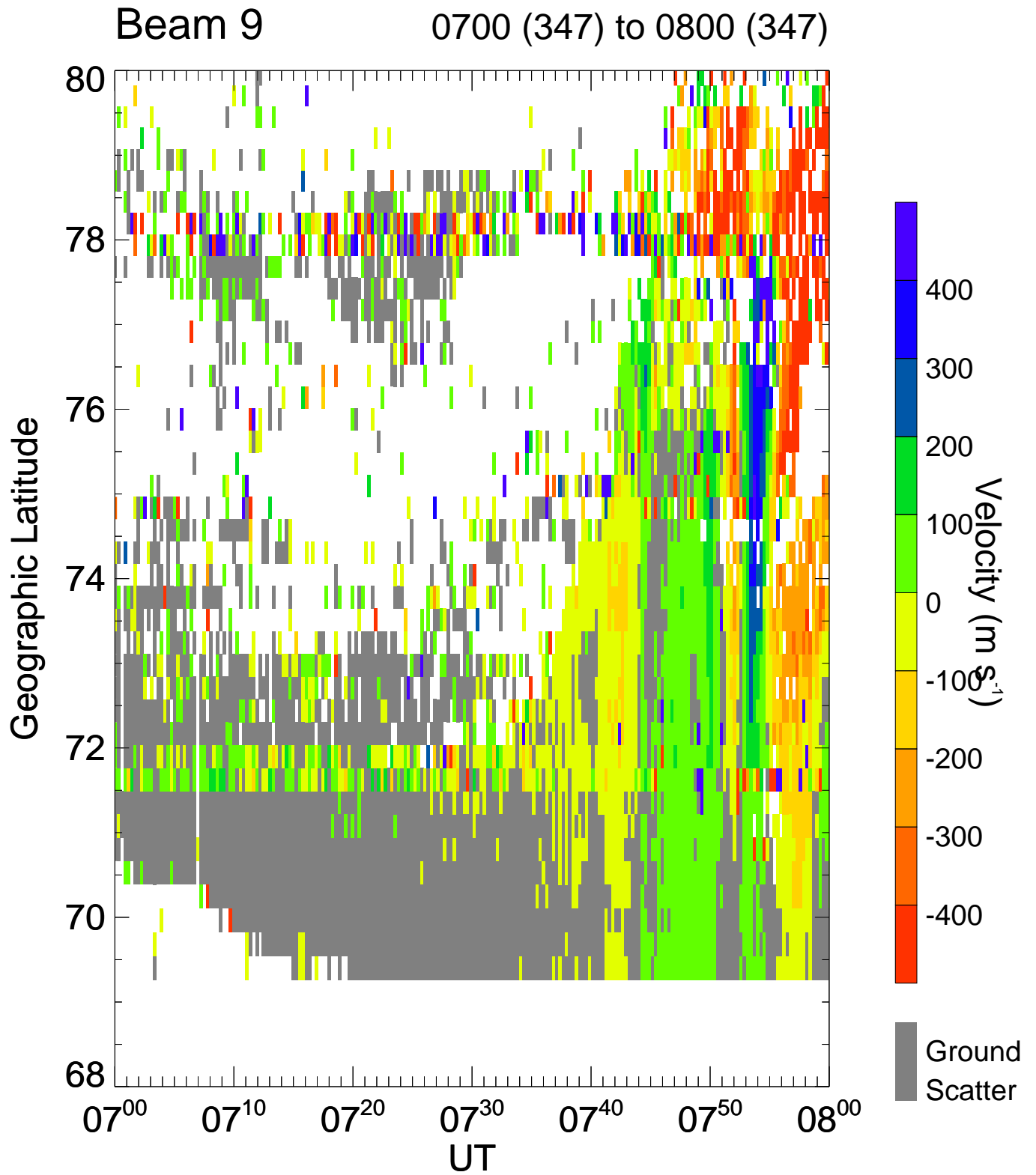


SUPERDARN PARAMETER PLOT

13 Dec 2015 ⁽³⁴⁷⁾

Hankasalmi: vel

unknown scan mode (160)

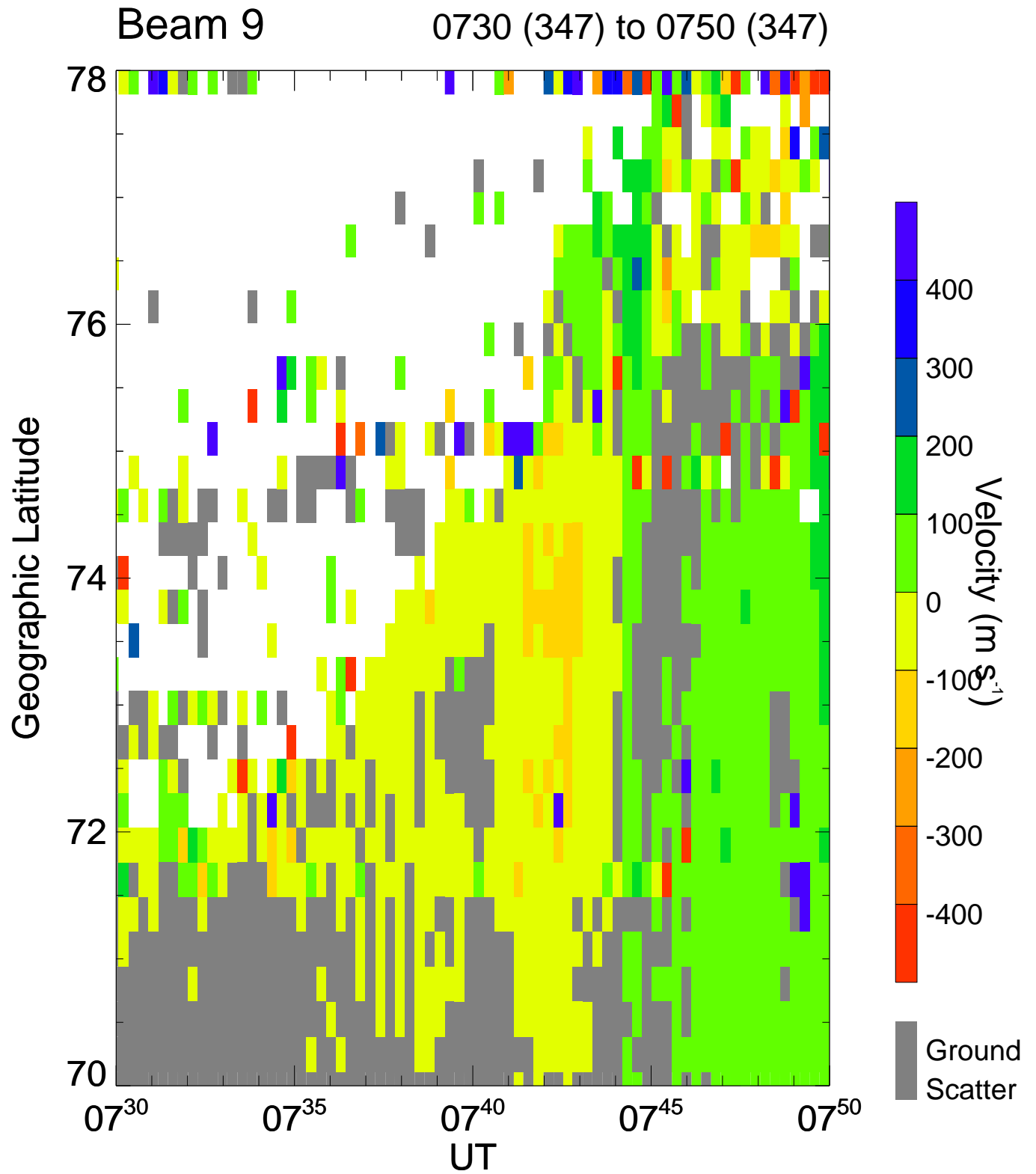


SUPERDARN PARAMETER PLOT

13 Dec 2015 ⁽³⁴⁷⁾

Hankasalmi: vel

unknown scan mode (160)

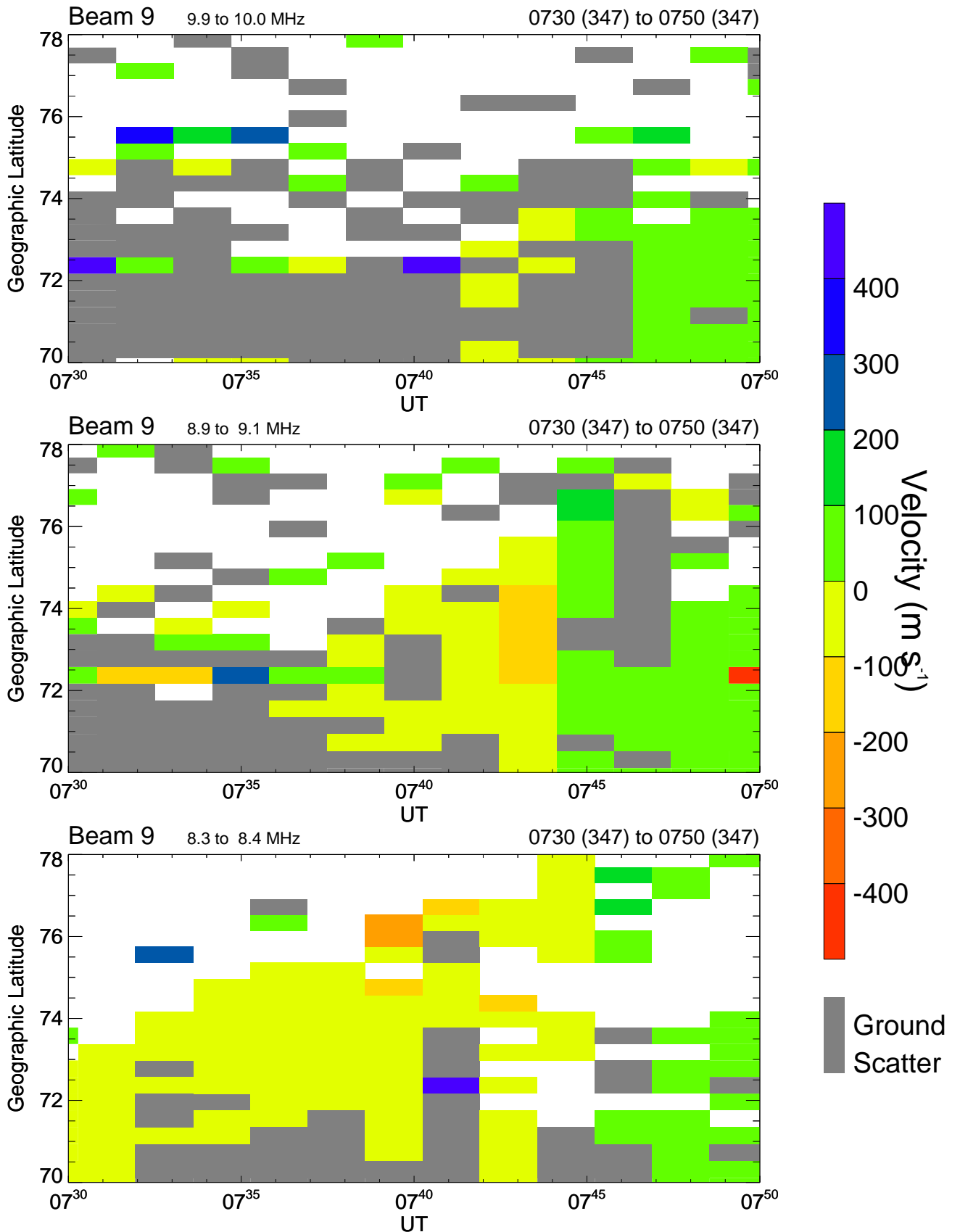


SUPERDARN PARAMETER PLOT

13 Dec 2015 ⁽³⁴⁷⁾

Hankasalmi: vel

unknown scan mode (-26160)



SUPERDARN PARAMETER PLOT

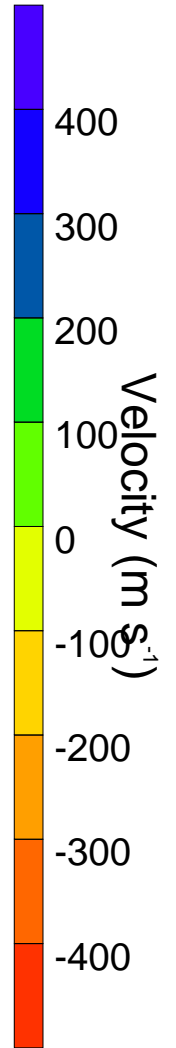
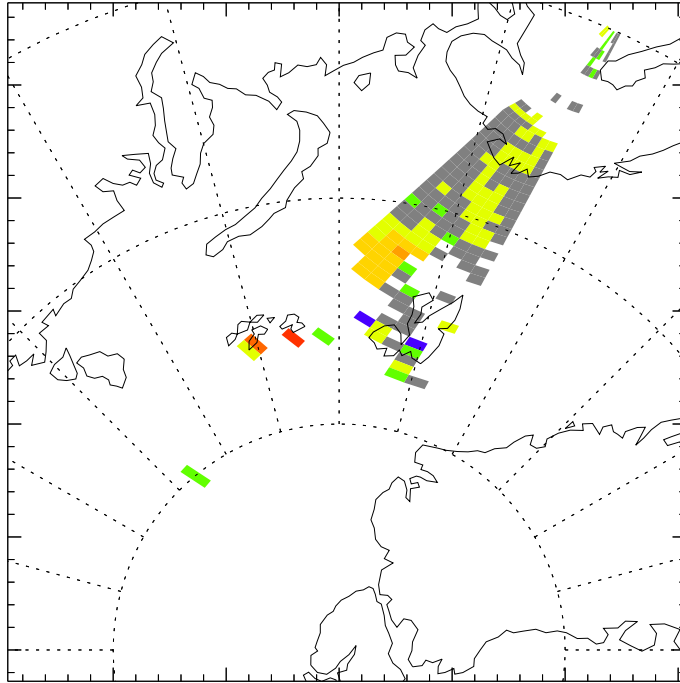
13 Dec 2015 ⁽³⁴⁷⁾

Hankasalmi: vel

unknown scan mode (-26160)

0742 59s (347)

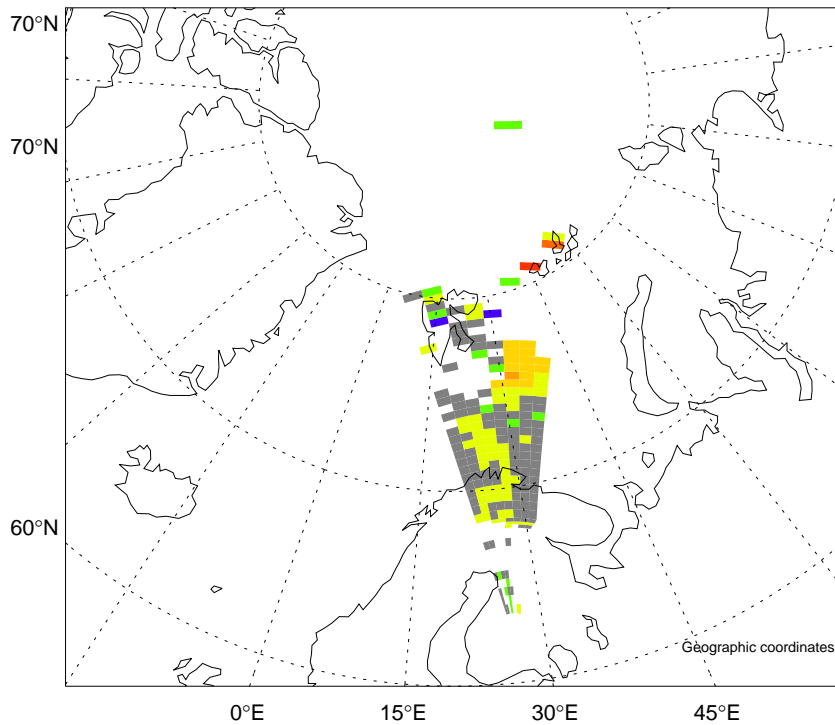
9.925 MHz



Ground Scatter

0742 59s (347)

9.925 MHz



SUPERDARN PARAMETER PLOT

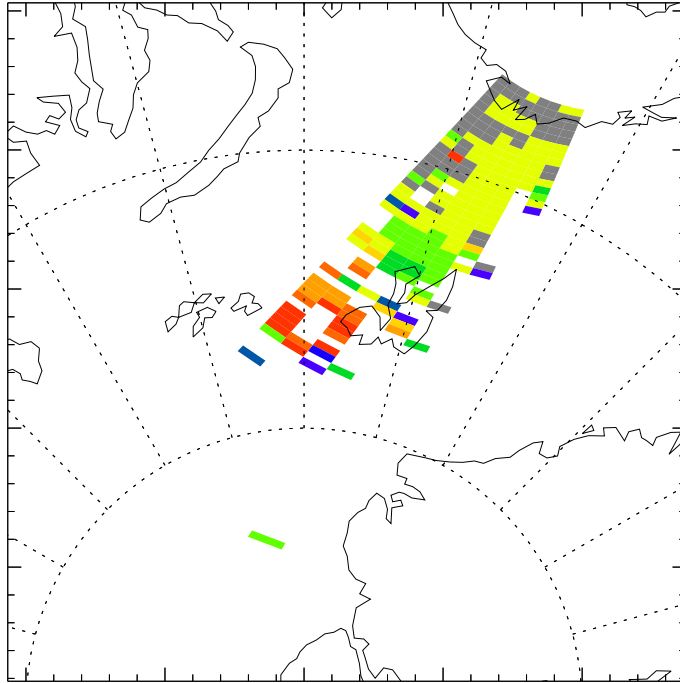
13 Dec 2015 ⁽³⁴⁷⁾

Hankasalmi: vel

unknown scan mode (160)

0742 59s (347)

9.035 MHz



0742 59s (347)

9.035 MHz

